

MSC

monofase singola cella
single phase single stage

Questo filtro di rete singola cella è indicato per qualsiasi dispositivo elettronico che richieda un filtro di linea. Disponibile per correnti da 1 a 35 A si caratterizza per una bassissima corrente di fuga che lo rende idoneo anche in campo elettromedicale. L'attenuazione media di questo filtro è pari a circa 50-60 dB. Tutti i modelli sono progettati secondo norme UL, CSA.

This single stage filter is indicated for whichever electronic device that demands a line filter. Available with currents from 1 to 35 A it is characterized for a very low leakage current that allows to use it in electromedical field. The medium insertion loss of this filter is around 50-60 dB. All models are designed to meet UL, CSA requirements.

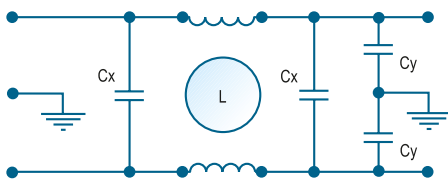


Come ordinare How to order

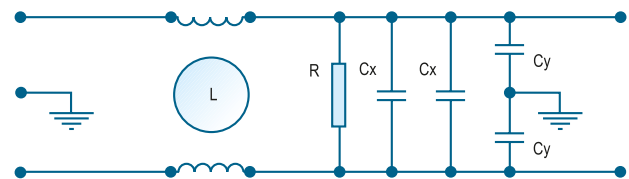
Modello Model	Codice prodotto Code	Corrente nominale [A] Rated current [A]	Tensione nominale [V] Rated voltage [V]	L [mH]	C _{x2} [µF]	C _y [nF]	R [MΩ]	Peso [Kg] Weight [Kg]
MSC01/250	00MSC01	1	115/250	2X4	0,1	2x4,7	-	0,065
MSC03/250	00MSC03	3	115/250	2x1,5	0,01	2x3,3	-	0,150
MSC06/250	00MSC06	6	115/250	2x4	2x4,7	2x1,0	0,68	0,210
MSC10/250	00MSC10	10	115/250	2x2,4	2x4,7	2x3,3	1,5	0,190
MSC20/250	00MSC20	20	115/250	2x0,4	2x0,1	2x3,3	1,5	0,140
MSC30/250	00MSC30	30	115/250	2x0,3	2x0,1	2x3,3	1,5	0,250
MSC35/250	00MSC35	35	115/250	2x0,3	2x0,1	2x3,3	1,5	0,710
MSC03/400	0MSC034	3	400	2x1,5	0,01	2x3,3	-	0,150
MSC06/400	0MSC064	6	400	2x4	2x4,7	2x1,0	0,68	0,210

Schema elettrico Electric schematic

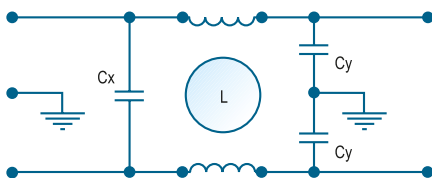
MSC 01



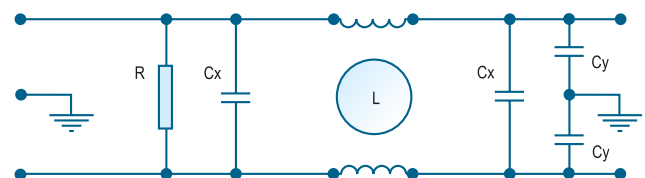
MSC 10



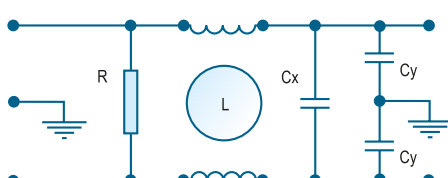
MSC 03 - MSC 03/400



MSC 20-30-35



MSC 06 - MSC 06/400

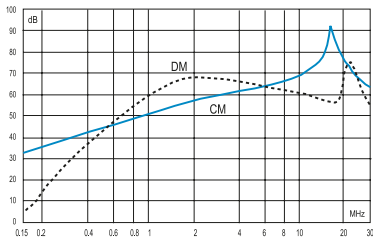


Specifiche tecniche
Specifications

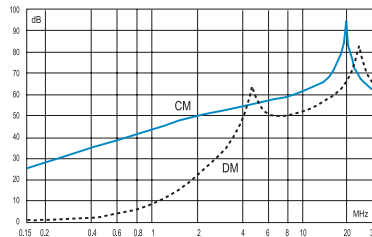
Tensione d'ingresso <i>Rated voltage</i>	115/250 Vac per modelli /250; 400 Vac per modelli /400 <i>150/250 Vac for /250 models, 400 Vac for /400 models</i>
Campo di frequenza - <i>Operating frequency</i>	50÷60 Hz
Corrente di fuga - <i>Leakage current</i>	< 0,5 mA
Categoria climatica - <i>Climatic category</i>	25/085/21 (IEC 60068)
Tensione di prova DC (2 sec) - <i>Test voltage DC</i>	Fase/Terra: 2250 Vdc; Fase/Fase: 1500 Vdc - <i>Line/Ground: 2250 Vdc; Line/Line: 1500 Vdc</i>
Tensione di prova AC (1 min.) - <i>Test voltage AC</i>	Fase/Terra: 1500 Vac - <i>Line/Ground: 1500 Vac</i>
Isolamento - <i>Insulation resistance</i>	> 1500 MΩ (Fase-Terra - <i>Line/Ground</i>)
Grado di protezione - <i>IP protection</i>	IP 00 secondo EN 60529 - <i>IP 00 according to EN 60529</i>
Allacciamento - <i>Connections</i>	Fast-on eccetto MSC 30/35 (viti M4) - <i>Fast-on except models MSC 30/35 (screws M4x4)</i>
Montaggio - <i>Mounting</i>	Collegamento in serie tra la rete ed il carico. Montaggio su piastra <i>Mounted in series between the line and the load. Panel mounting</i>
Certificazioni - <i>Approvals</i>	CE; MSC 01, - 03, -06, -10, -20 sono UR listed (file E172199); il modello MSC 06 è certificato CSA <i>CE; MSC 01, -03, -06, -10, -20 are UR listed models (UL file No. E172199); MSC 06 model is CSA also</i>
Standards di riferimento - <i>Reference standards</i>	EN 60939 - UL 1283 - C22.2 No.8

Attenuazioni (CISPR 17)
Insertion loss (CISPR 17)

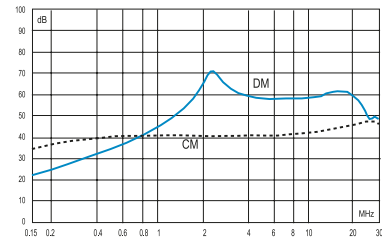
MSC01



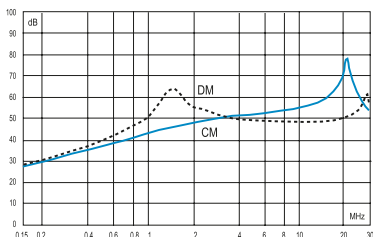
MSC03-MSC03/400



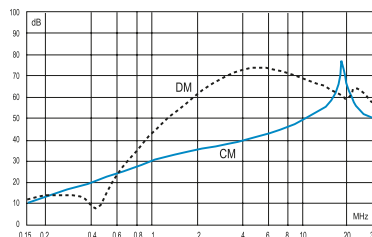
MSC06-MSC06/400



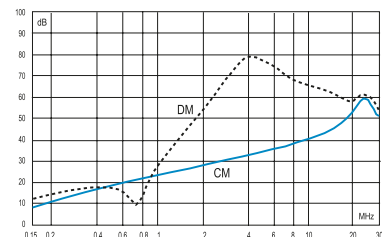
MSC10



MSC20

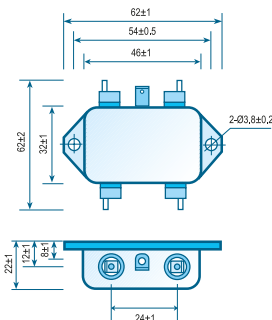


MSC30

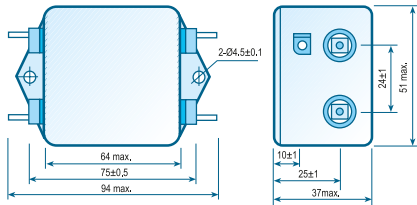


Dimensioni [mm]
Dimensions [mm]

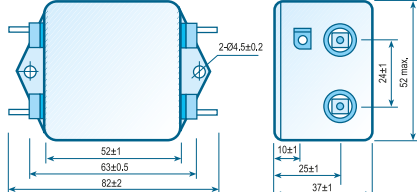
MSC 01
MSC 03
MSC 03/400



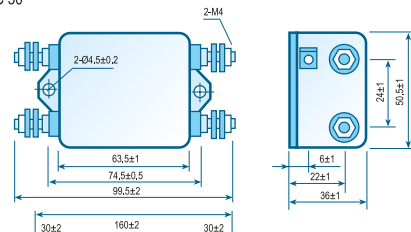
MSC 06
MSC 06/400



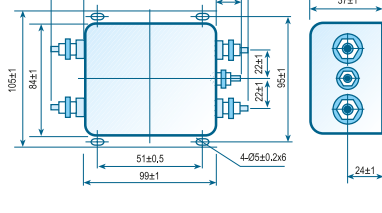
MSC 10
MSC 20



MSC 30



MSC 35



MDC

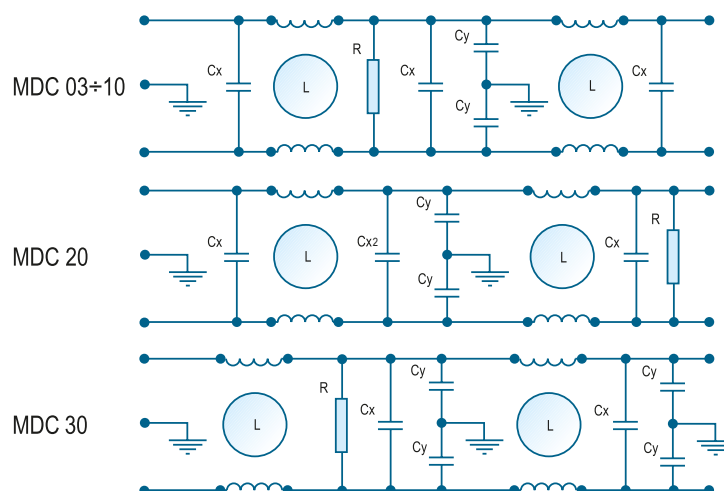
monofase doppia cella
single phase double stage

Disponibile per correnti da 3 a 30 A, questo filtro monofase a doppia cella fornisce interessanti livelli di attenuazione che arrivano anche a ca. 80 dB. Su richiesta vengono realizzate serie speciali. Tutti i modelli sono progettati secondo norme UL, CSA.

Available for currents from 3 to 30 A, this double stage filter has interesting attenuation levels (up to approximately 80 dB). Special versions available on request. All models are designed to meet UL requirements.


Specifiche tecniche
Specifications

Tensione d'ingresso <i>Rated voltage</i>	115/250 Vac per modelli /250; 400 Vac per modelli /400 150/250 Vac for /250 models, 400 Vac for /400 models
Campo di frequenza - <i>Operating frequency</i>	50÷60 Hz
Corrente di fuga - <i>Leakage current</i>	< 0,5 mA
Categoria climatica - <i>Climatic category</i>	25/085/21 (IEC 60068-1)
Tensione di prova DC (2 sec) - <i>Test voltage DC</i>	Fase/Terra: 2250 Vdc; Fase/Fase: 1500 Vdc - Line/Ground: 2250 Vdc; Line/Line: 1500 Vdc
Tensione di prova AC (1 min.) - <i>Test voltage AC</i>	Fase/Terra: 1500 Vac - Line/Ground: 1500 Vac
Isolamento - <i>Insulation resistance</i>	> 1500 MΩ (Fase-Terra - Line/Ground)
Grado di protezione - <i>IP protection</i>	IP 00 secondo EN 60529 - IP 00 according to EN 60529
Allacciamento - <i>Connections</i>	Fast-on eccetto MDC 20/30 (viti M4) - Fast-on except models MDC 20/30 (screws M4x4)
Montaggio - <i>Mounting</i>	Collegamento in serie tra la rete ed il carico. Montaggio su piastra Mounted in series between the line and the load. Panel mounting
Certificazioni - <i>Approvals</i>	CE; MDC 03, -06, -10 sono UR listed (file E172199) CE; MDC 03, -06, -10 are UR listed models (UL file No. E172199)
Standards di riferimento - <i>Reference standards</i>	EN 60939 - UL 1283 - C22.2 No.8

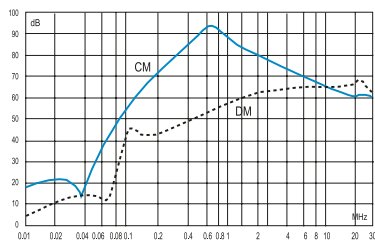
Schema elettrico
Electric schematic


Come ordinare
How to order

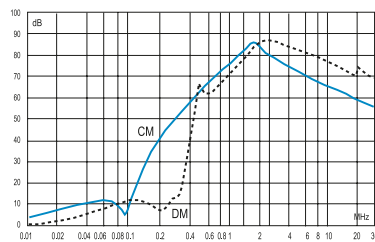
Modello Model	Codice prodotto Code	Corrente nominale [A] Rated current [A]	Tensione nominale [V] Rated voltage [V]	L [mH]	C _x [μF]	C _{x2} [μF]	C _y [nF]	R [MΩ]	Peso [Kg] Weight [Kg]
MDC03/250	00MDC03	3	115/250	2x4+2x8	3x0,47	-	2x3,3	1,5	0,150
MDC06/250	00MDC06	6	115/250	2x1+2x1	3x0,1	-	2x3,3	1,5	0,160
MDC10/250	00MDC10	10	115/250	2x0,5+2x0,5	3x0,1	-	2x3,3	1,5	0,160
MDC20/250	00MDC20	20	115/250	2x0,7+2x0,7	2x0,47	1x1	2x4,7	1,5	0,250
MDC30/250	00MDC30	30	115/250	2x0,4+2x0,4	2x0,47	-	2x4,7	1,5	0,800
MDC06/400	0MDC064	6	400	2x0,5+2x0,5	3x0,1	-	2x3,3	1,5	0,190

Attenuazioni (CISPR 17)
Insertion loss (CISPR 17)

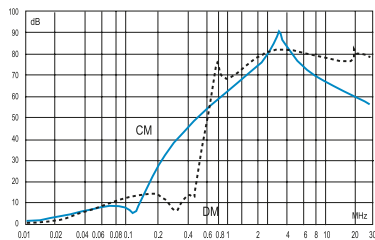
MDC03



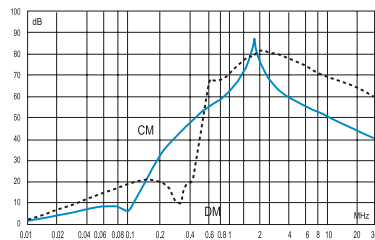
MDC06-MDC06/400



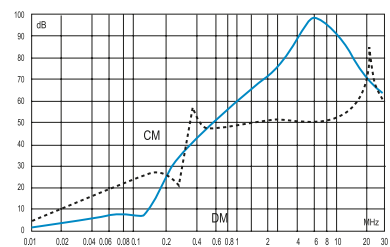
MDC10



MDC20

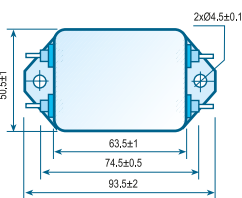


MDC30

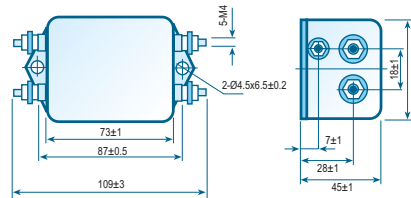


Dimensioni [mm]
Dimensions [mm]

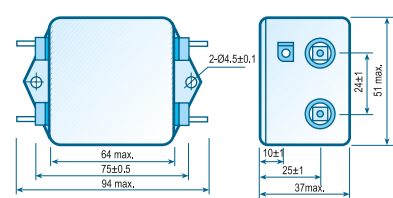
MDC 03+10



MDC 20



MDC 06/400



MDC 30

