



Caratteristiche

- Elevate caratteristiche di attenuazione (150kHz÷1MHz)
- Monofase
- Singola cella
- Bassa dispersione
- Morsettiera push-down rapida e facile
- Copertura di sicurezza
- Montabile su guida DIN

Applicazioni

- Attrezzature industriali
- Personal computer e periferiche
- Apparecchi digitali

Features

- High attenuation characteristics (150kHz÷1MHz)
- Single Phase
- 1-Stage filter
- Low leakage
- Quick and easy push-down terminal block
- Safety cover
- DIN rail mountable

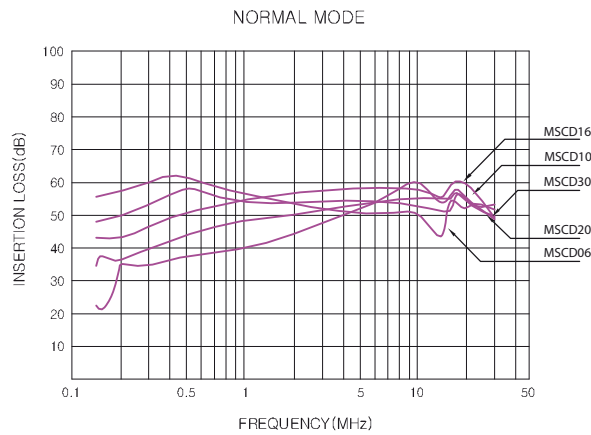
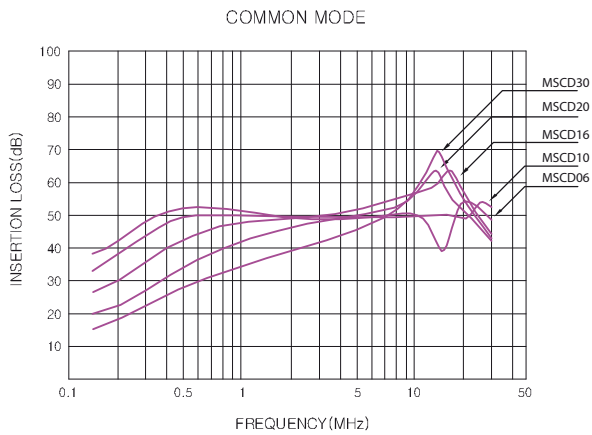
Applications

- Industrial equipments
- Personal computer & peripherals
- Digital equipments

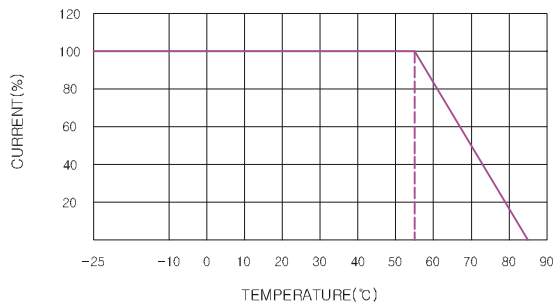


SPECIFICHE <i>Specifications</i>	MODELLI - <i>Models</i>				
	MSCD06	MSCD10	MSCD16	MSCD20	MSCD30
Codice <i>Code</i>	2390MSCD06	2390MSCD10	2390MSCD16	2390MSCD20	2390MSCD30
Tensione nominale di ingresso (AC/DC) <i>Rated voltage (AC/DC)</i>	250V max.	250V max.	250V max.	250V max.	250V max.
Corrente nominale <i>Rated current</i>	6A	10A	16A	20A	30A
Corrente di dispersione (60Hz) <i>Leakage current (60Hz)</i>	1.0mA max.	1.0mA max.	1.0mA max.	1.0mA max.	1.0mA max.
Incremento di temperatura <i>Temperature rise</i>	50°C max.	50°C max.	50°C max.	50°C max.	50°C max.
Temperatura operativa <i>Operating temperature range</i>	-25÷+100°C	-25÷+100°C	-25÷+100°C	-25÷+100°C	-25÷+100°C
Certificazioni <i>Approvals</i>	UL, C-UL, CE	UL, C-UL, CE	UL, C-UL, CE	UL, C-UL, CE	UL, C-UL, CE

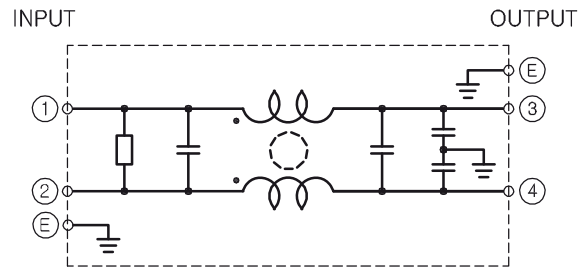
ATTENUAZIONI - Insertion loss



CURVA DI DERATING - Derating curve

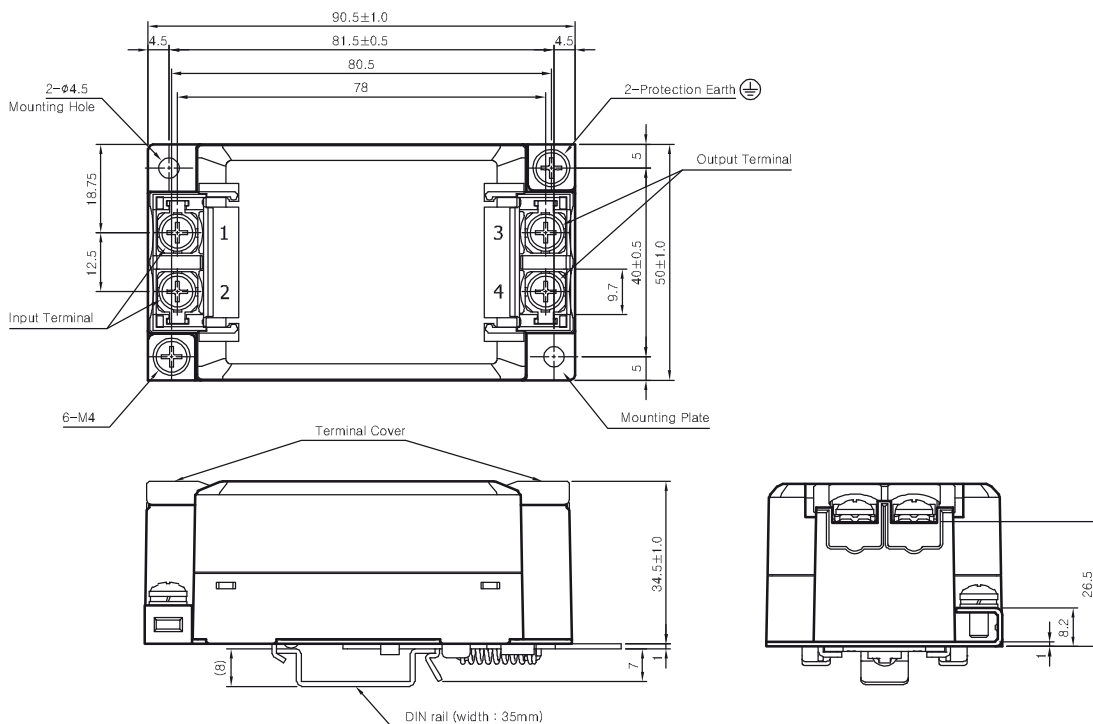


SCHEMA ELETTRICO - Circuit diagram



CARATTERISTICHE FISICHE - Physical Characteristics

Dimensioni [mm] - Case size [mm]	90.5 x 50 x 34.5
Peso - Weight	205 g



MDCD



Caratteristiche

- Elevate caratteristiche di attenuazione (150kHz÷10MHz)
- Monofase
- Doppia cella
- Bassa dispersione
- Morsettiera push-down rapida e facile
- Copertura di sicurezza
- Montabile su guida DIN

Applicazioni

- Attrezzature industriali
- Personal computer e periferiche
- Apparecchi digitali

Features

- High attenuation characteristics (150kHz÷10MHz)
- Single Phase
- 2-Stage filter
- Low leakage
- Quick and easy push-down terminal block
- Safety cover
- DIN rail mountable

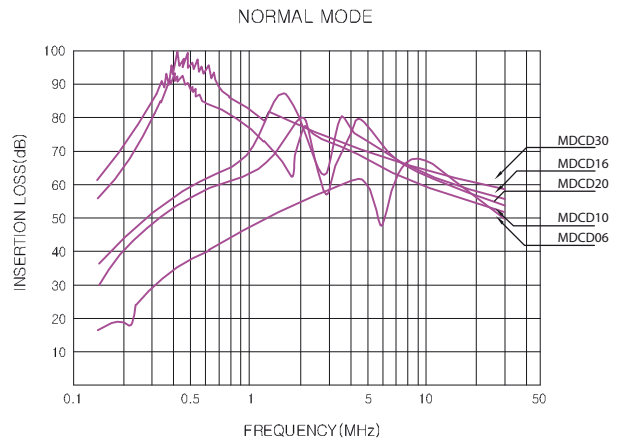
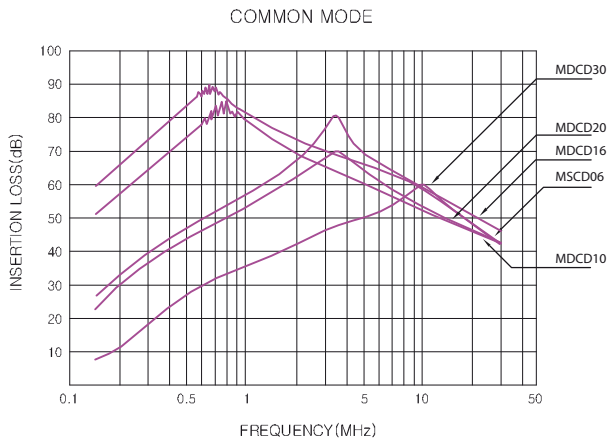
Applications

- Industrial equipments
- Personal computer & peripherals
- Digital equipments

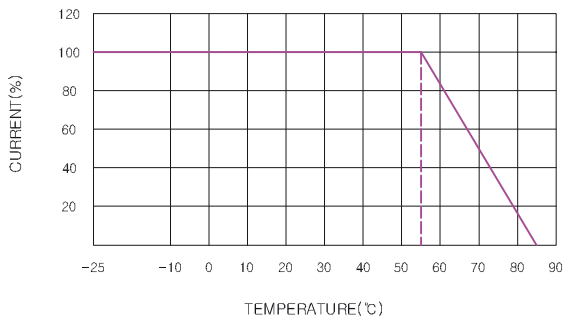


SPECIFICHE <i>Specifications</i>	MODELLI - <i>Models</i>				
	MDCD06	MDCD10	MDCD16	MDCD20	MDCD30
Codice <i>Code</i>	2390MDCD06	2390MDCD10	2390MDCD16	2390MDCD20	2390MDCD30
Tensione nominale di ingresso (AC/DC) <i>Rated voltage (AC/DC)</i>	250V max.	250V max.	250V max.	250V max.	250V max.
Corrente nominale <i>Rated current</i>	6A	10A	16A	20A	30A
Corrente di dispersione (60Hz) <i>Leakage current (60Hz)</i>	1.0mA max.	1.0mA max.	1.0mA max.	1.0mA max.	1.0mA max.
Incremento di temperatura <i>Temperature rise</i>	50°C max.	50°C max.	50°C max.	50°C max.	50°C max.
Temperatura operativa <i>Operating temperature range</i>	-25÷+85°C	-25÷+85°C	-25÷+85°C	-25÷+85°C	-25÷+85°C
Certificazioni <i>Approvals</i>	UL, C-UL, CE	UL, C-UL, CE	UL, C-UL, CE	UL, C-UL, CE	UL, C-UL, CE

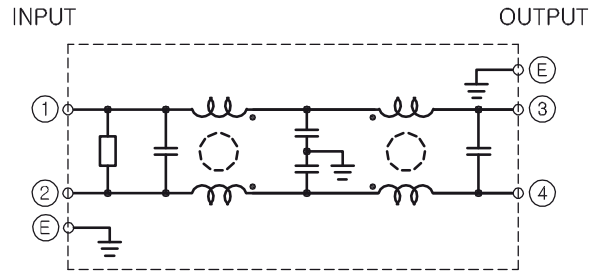
ATTENUAZIONI - Insertion loss



CURVA DI DERATING - Derating curve



SCHEMA ELETTRICO - Circuit diagram



CARATTERISTICHE FISICHE - Physical Characteristics

Dimensioni [mm] - Case size [mm]	90.5 x 50 x 40
Peso - Weight	210 g

