

Monofase - Doppia cella Montaggio su guida DIN

Elevate caratteristiche di attenuazione (150kHz÷10MHz).
Bassa dispersione.
Morsetteria push-down rapida e facile.
Copertura di sicurezza.

Applicazioni:

Attrezzature industriali.
Personal computer e periferiche.
Apparecchi digitali.



Single phase - Double stage - DIN rail

High attenuation characteristics (150kHz÷10MHz).
Low leakage.
Quick and easy push-down terminal block.
Safety cover.

Applications:

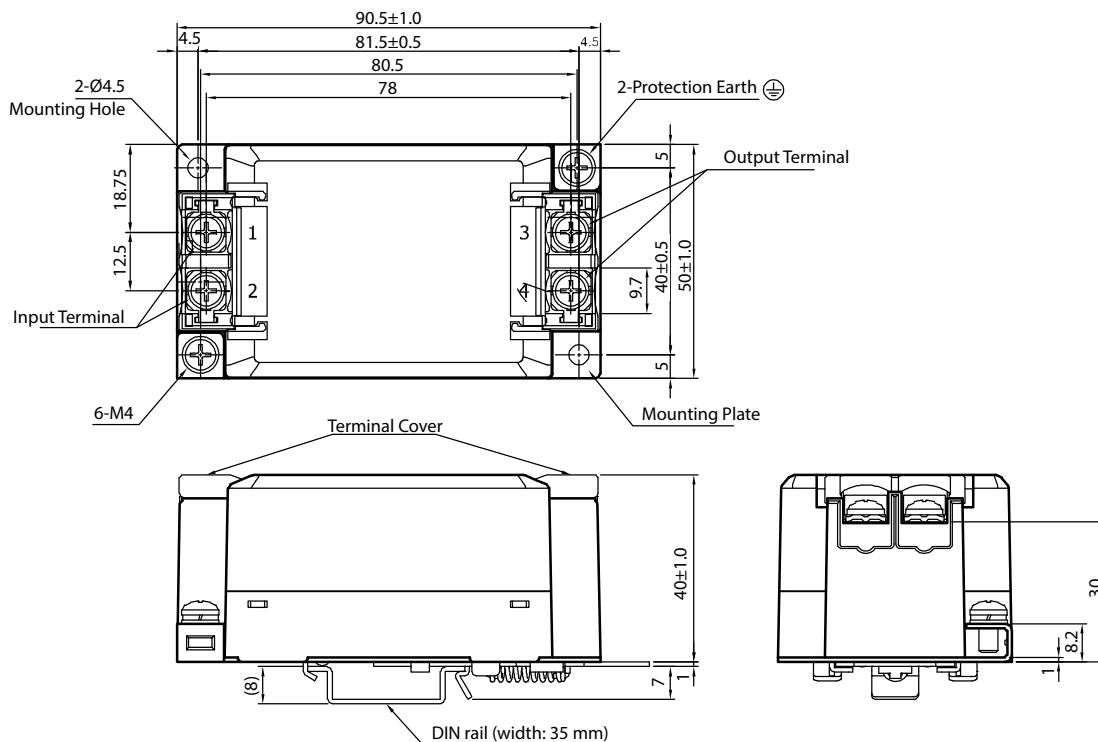
Industrial equipments.
Personal computer & peripherals.
Digital equipments.

Corrente di fuga Leakage current	< 1.0 mA
Categoria climatica Climatic category	25/100/21



MODELLI Model List	Codice Code	Corrente nom. [A] Rated current	Tensione nom. [V] Rated voltage	L [mH]	C _x [µF]	C _y [nF]	R [MΩ]	Dimensioni Case size L x W x D	Peso Weight
MDCD06	2390MDCD06	6	250 max.	4x3.09	2x1.0	2x4.70	0.47	90.5 x 50 x 40 mm	210 g
MDCD10	2390MDCD10	10		4x1.93					
MDCD16	2390MDCD16	16		4x0.55					
MDCD20	2390MDCD20	20		4x0.42					
MDCD30	2390MDCD30	30		4x0.14					

DIMENSIONI [mm] - Dimensions [mm]



Monofase - Singola cella Montaggio su guida DIN

Elevate caratteristiche di attenuazione (150kHz÷1MHz).
Bassa dispersione.
Morsetteria push-down rapida e facile.
Copertura di sicurezza.

Applicazioni:

Attrezzature industriali.
Personal computer e periferiche.
Apparecchi digitali.



Single phase - Single stage - DIN rail

High attenuation characteristics (150kHz÷1MHz).
Low leakage.
Quick and easy push-down terminal block.
Safety cover.

Applications:

Industrial equipments.
Personal computer & peripherals.
Digital equipments.

Corrente di fuga Leakage current	< 1.0 mA
Categoria climatica Climatic category	25/100/21



MODELLI Model List	Codice Code	Corrente nom. [A] Rated current	Tensione nom. [V] Rated voltage	L [mH]	C _x [µF]	C _y [nF]	R [MΩ]	Dimensioni Case size L x W x D	Peso Weight
MSCD06	2390MSCD06	6	250 max.	2x4.80	2x0.47	2x4.7	0.47	90.5 x 50 x 34.5 mm	205 g
MSCD10	2390MSCD10	10		2x2.74					
MSCD16	2390MSCD16	16		2x1.25					
MSCD30	2390MSCD30	30		2x0.35					

DIMENSIONI [mm] - Dimensions [mm]

