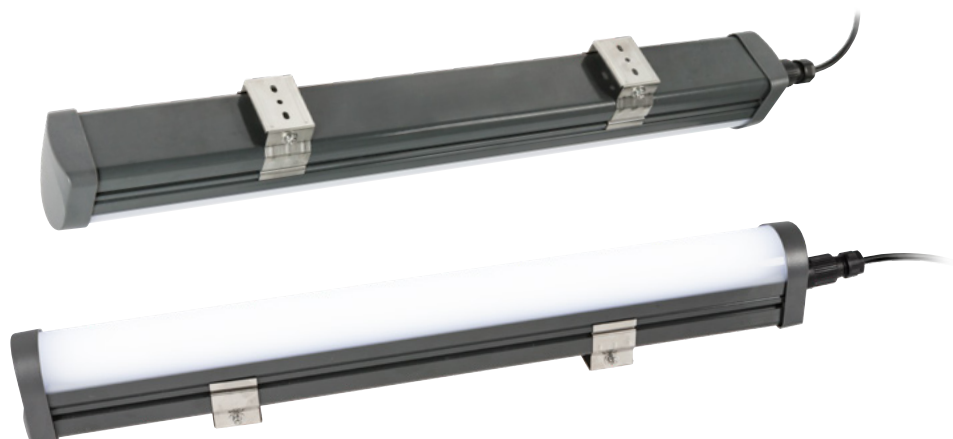


DTS-LED LINE PLAFO

illuminazione a LED
per macchinari
Machinery LED lighting



IP65

CE

RoHS
COMPLIANT

MODELLI Model List	Codice Code	Potenza Power	Tensione d'ingresso Input voltage	Flusso luminoso Luminous flux	Fascio uminoso Beam	Dimensioni Case size XYZ	Peso Weight
DTS-LED LINE plafo 1200	3470131200	40 W	230 VAC	3500 lm	125°	1185 x 78 x 66	1100 g

Grado di protezione / Protection level	IP65
Efficienza luminosa Luminous efficiency	85 - 95 lm/W
Alimentatore / Driver	Isolato / Isolated
Temperatura operativa Operating temperature	<60 °C
Temperatura operativa Working temperature	-20...+45 °C
Durata / Lifespan	50000 h
CCT	5500-6000K
CRI	>80%
PF	>0.9
Modalità di montaggio Mounting method	Fissaggio con viti Fixed by screws
Connessione / Connection	Connettore a cablare in dotazione, cavo non incluso Field connector included, cable not included

mod. 1200	Altezza Height	Area	LUX max. / med.	
	1 m	Ø 2.70 m	1236	334
2 m	Ø 5.50 m	309	83	
3 m	Ø 8.20 m	137	37	
4 m	Ø 11.00 m	77	21	
5 m	Ø 13.70 m	49	13	

Dimensioni / Dimensions

